



(FoMaSys-Module 4)

MiPro

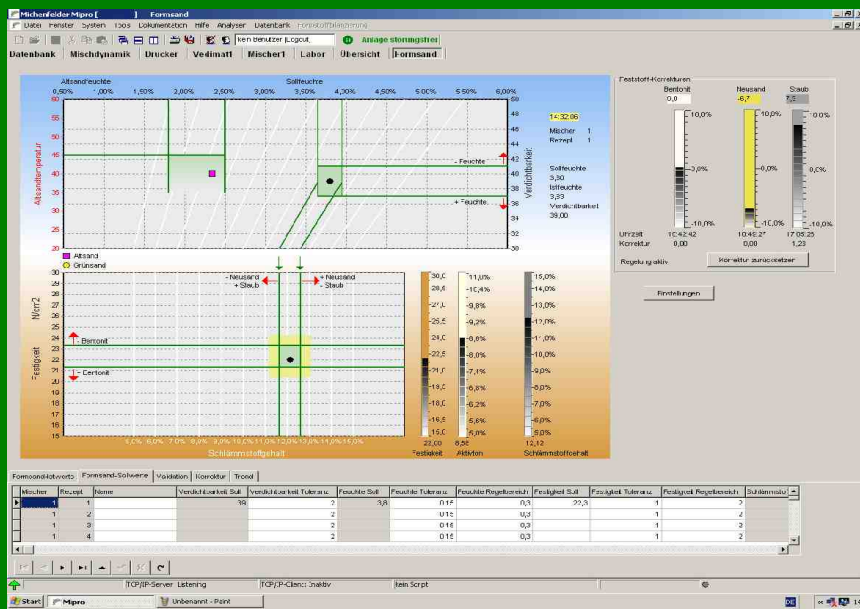
The central process control system for process data analysis and archiving, quality assurance, remote control and remote maintenance in the sand plant

Moulding Sand Matrix®

The navigation system for your sand preparation

The Moulding Sand Matrix is protected by design patent

For the very first time, the Moulding Sand Matrix shows the interaction of most relevant sand parameters (*used sand moisture, used sand temperature, green sand moisture, compactability, fines content, strength and active bentonite content*) and their impact on overall sand quality during production in an unprecedented, innovative, useful and easy-to-understand way. Foundry man is navigated reliably by quality indication points moving within three networking quality windows. As long as the quality indication points are moving within the quality windows, sand quality is within preset quality limit values as well. If an indication point is exceeding a quality window border, the Moulding Sand Matrix offers target-oriented countermeasures in plaintext to bring it back into the window again and thus bringing sand quality back into desired and preset quality range again, too.



Corrective moulding material amounts are different from sand plant to sand plant and cannot be preset during initial commissioning. They must be determined empirically by the customer himself in the course of time and subsequently dosed under own responsibility.

The Moulding Sand Matrix and its quality navigation function by moving quality indication points, combined with automatically generated recommendations for countermeasures means to have a basic system facilitating the process of moulding materials control.

After having determined precise correction values over a certain period of time, MiPro can optionally be used for correcting moulding materials fully automatically, provided that there is an up-to-date and protocoll-controlled weighing system.

CENTRAL PROCESS CONTROL AND QUALITY ASSURANCE SYSTEM